



SecureAPlus Installation Guide

Based on SecureAPlus v3

September 2015

Copyright Information

Information in this document is subject to change without notice. Companies, names and data used in examples herein are fictitious unless otherwise noted. No part of this document may be reproduced or transmitted in any form or by any means, electronic or mechanical, for any purpose, without the written permission of SecureAge Technology Pte Ltd.

Table of Contents

1	Introduction	1
2	System Requirements	2
3	Installing SecureAPlus	3
4	Installing Application Whitelisting with Whitelist Gold Image	20
5	Silent Installation of SecureAPlus	23
6	SecureAPlus Mass Installation	24
	Contact Us	25

1 Introduction

SecureAge SecureAPlus combines application whitelisting and antivirus components to protect your computer from known and unknown malware more effectively. It scans and removes known malware like viruses, Trojan Horses and worms just like any other conventional antivirus – but better. It does what other conventional antivirus cannot do – it can block any new and advanced malware regardless of how they try to evade detection. It even alerts you when risky programs are attempting to run to prevent any accidental installation that potentially can harm your computer. Hence, SecureAge SecureAPlus is the next generation antivirus that truly protects your computer without taking any chance.

This guide provides details on the installation of SecureAPlus software. For usage of SecureAPlus software after installation, please refer to SecureAPlus User Guide.



Note:

- ▶ This user guide is published based on standard SecureAPlus package in Windows 7 and environment.

2 System Requirements

System requirements for SecureAPlus Beta include:

- 2 GHz Pentium 4 or higher processor
- 1GB of RAM or as recommended by the Windows OS whichever is higher
- 300 MB hard disk free space or more
- Local Hard disk that is formatted with NTFS file system
- Supported Operating Systems:
 - Windows XP SP3 and above (32-bit and 64-bit)
 - Windows Vista SP2 and above (32-bit and 64-bit)
 - Windows 7 Home Basic and above (32-bit and 64-bit)
 - Windows 8.1 (32-bit and 64-bit)
 - Windows 8 (32-bit and 64-bit)
 - Windows Server 2003 R2 SP1 and above (32-bit and 64-bit)
 - Windows Server 2008 SP1 and above (32-bit and 64-bit)
 - Windows Server 2008 R2 and above (64-bit)
 - Windows Server 2012 (64-bit)
 - Windows Server R2 2012 (64-bit)
- Display Size Settings (DPI) of 100% and >=125%

3 Installing SecureAPlus

Before installation of SecureAPlus software, it is recommended that you close all applications as SecureAPlus software will require rebooting of machine at the end of installation process in order to have all the features working properly.

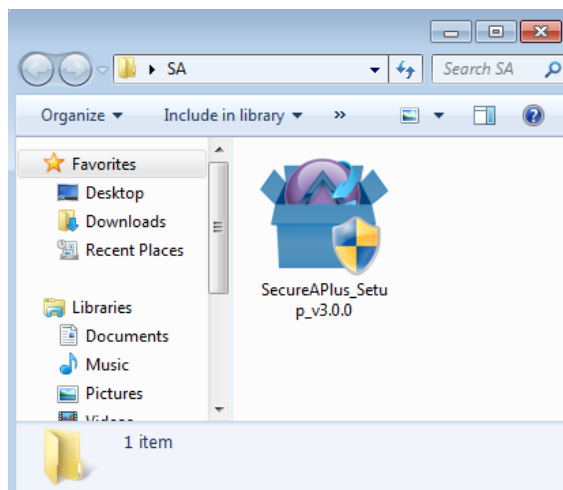


Note:

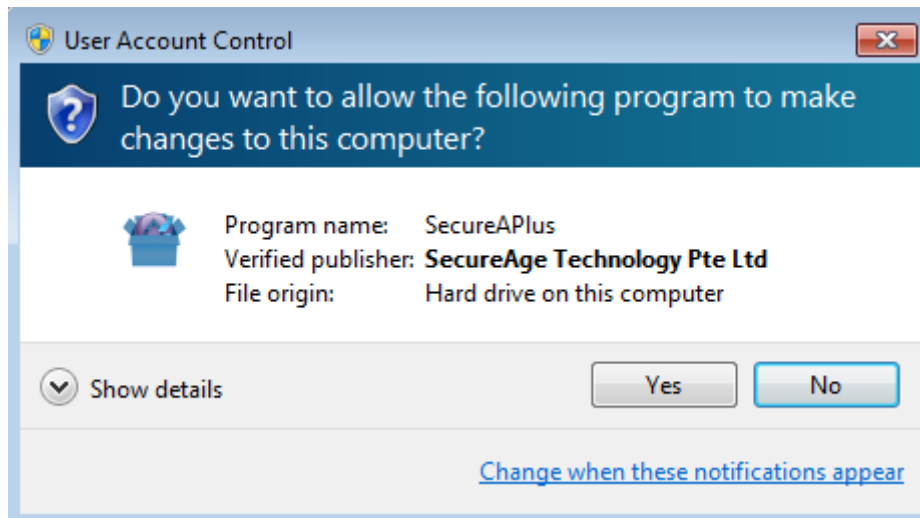
- ▶ SecureAPlus software installation requires administrator privileges.
- ▶ The following steps is based on full installation of SecureAPlus

To install SecureAPlus, follow the steps below:

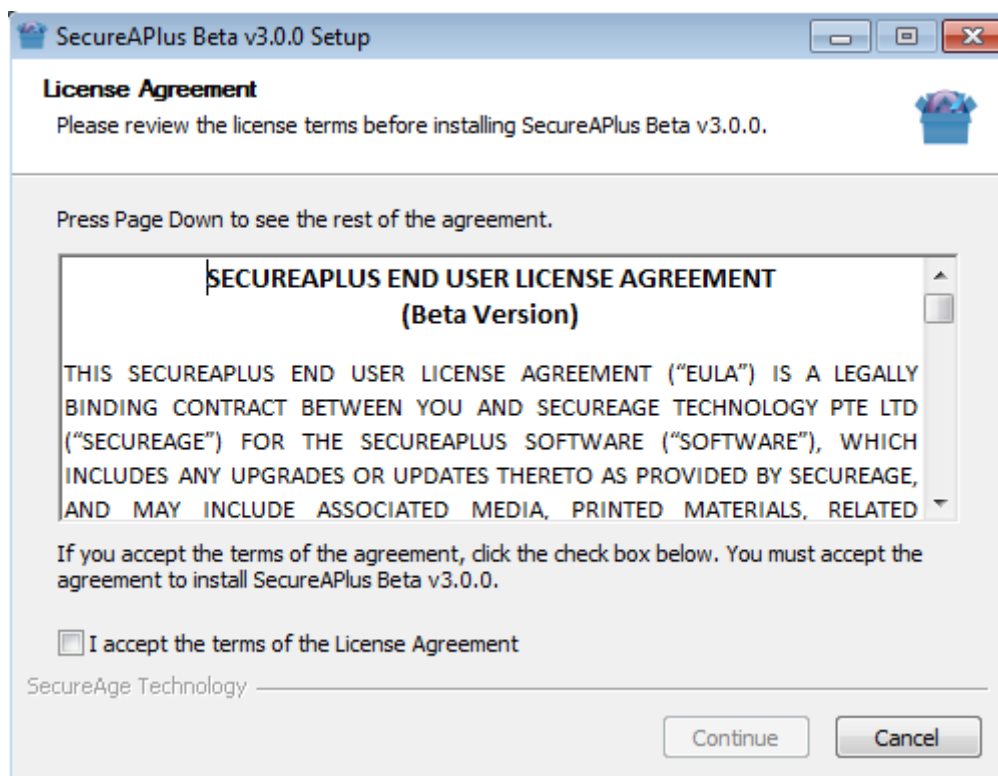
- Run the SecureAPlus installation file.

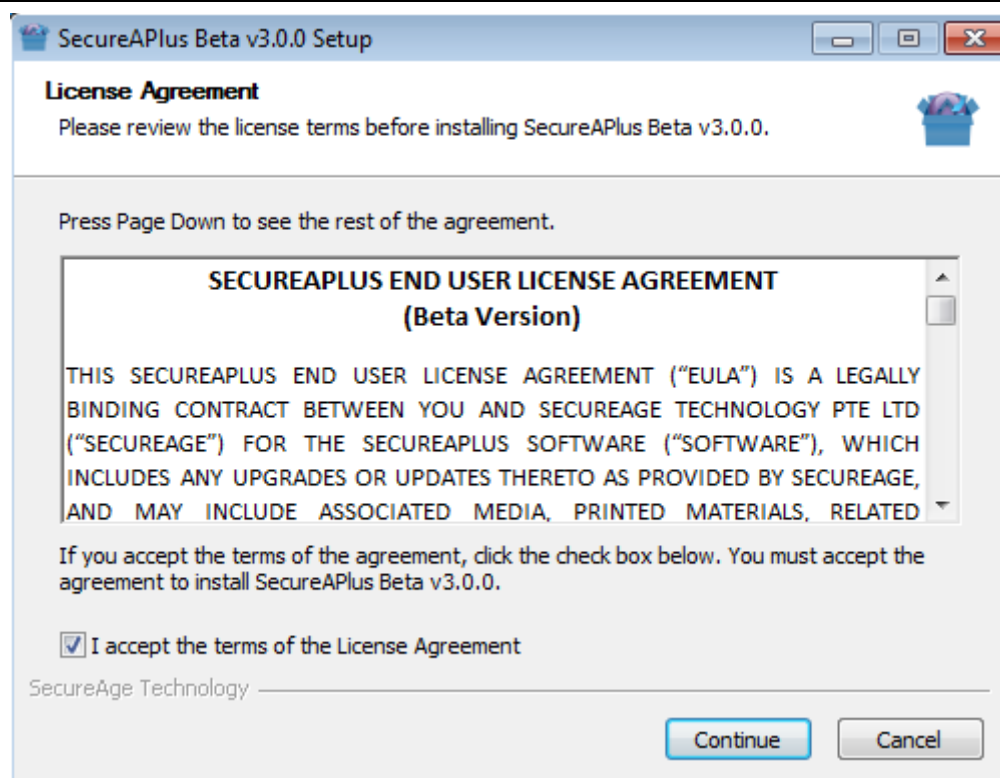


- Certain operating systems will require allowing **User Account Control** for installing SecureAPlus software. Click **Yes** to run setup for SecureAPlus software, otherwise click **No**.

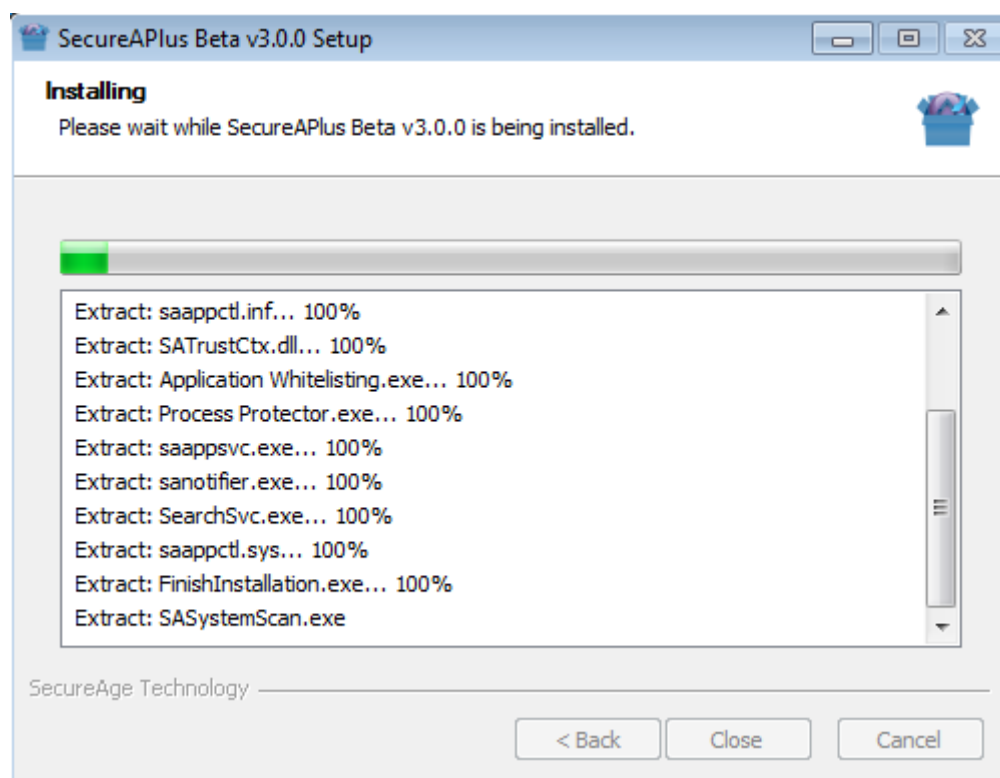


- In the **License Agreement** window, check **I Accept the terms of the License Agreement**. Click on **Continue** button to proceed.



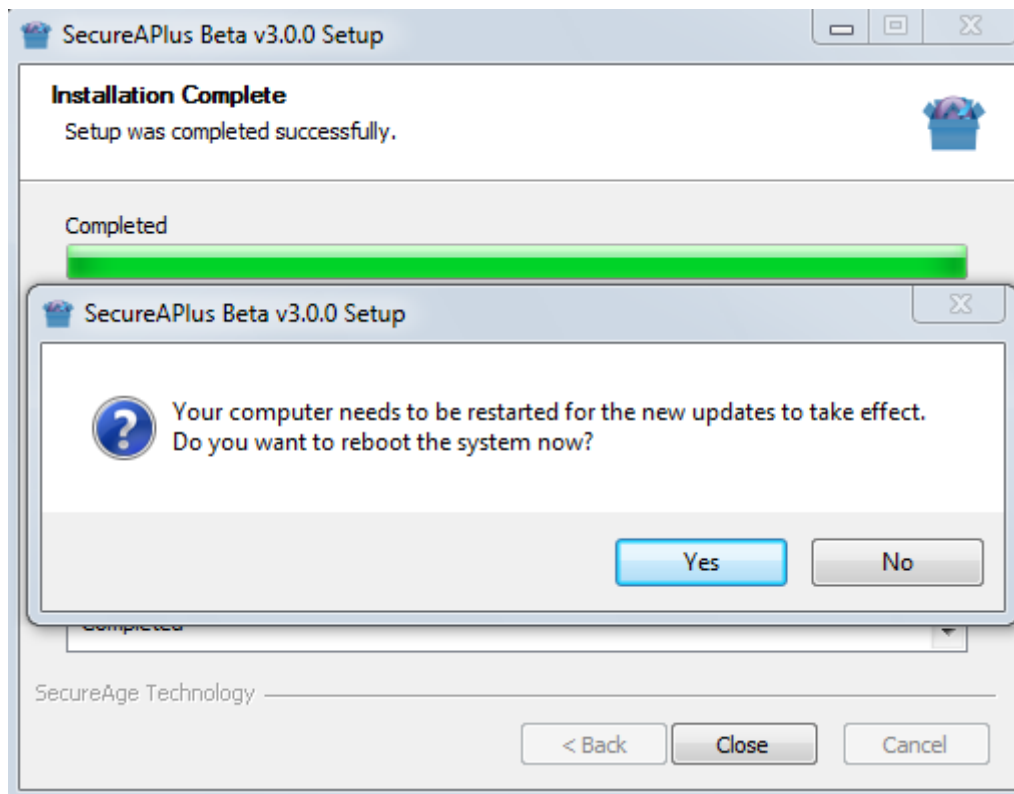


- SecureAPlus installation will start.

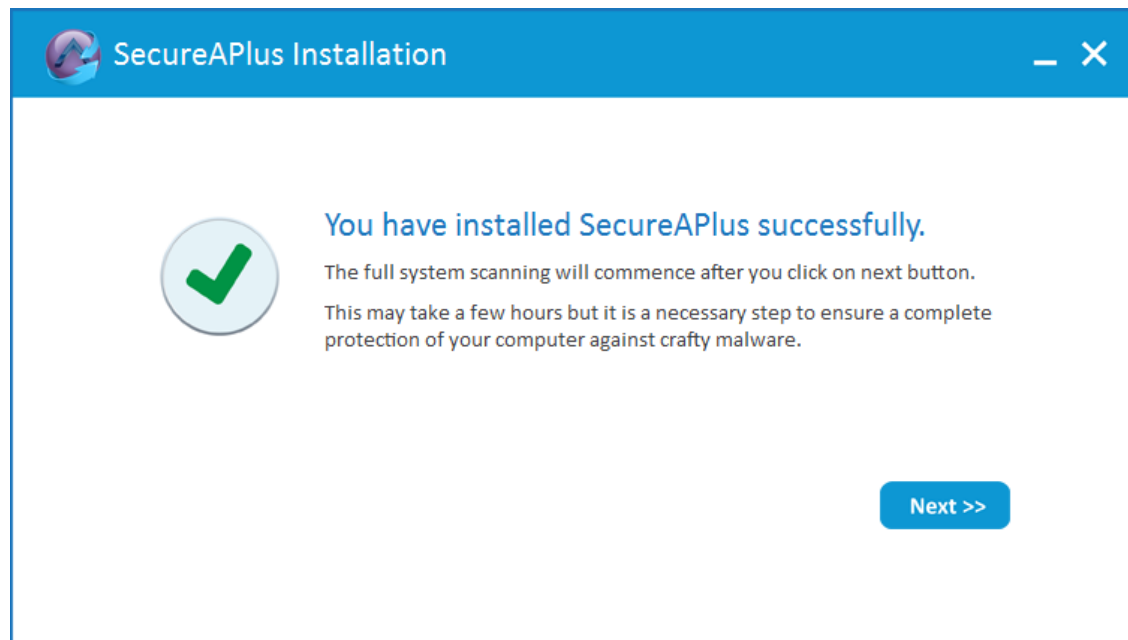


- (This step will not appear if your machine is a clean machine without SecureAPlus installed previously.)

If the machine has SecureAPlus files already being installed previously, it will prompt to reboot when installation completes, select **Yes** to restart your computer. Otherwise, select **No** and reboot later.



- Upon completion of SecureAPlus installation, the SecureAPlus successful installed message window will be displayed as shown below:

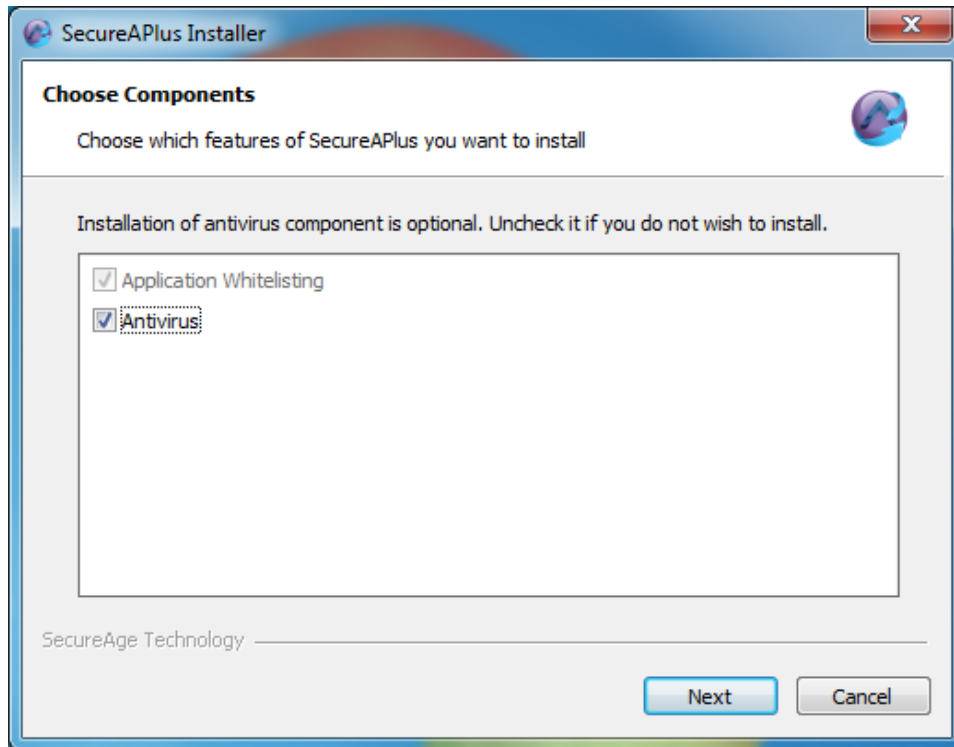


- Click on **Next >>**.



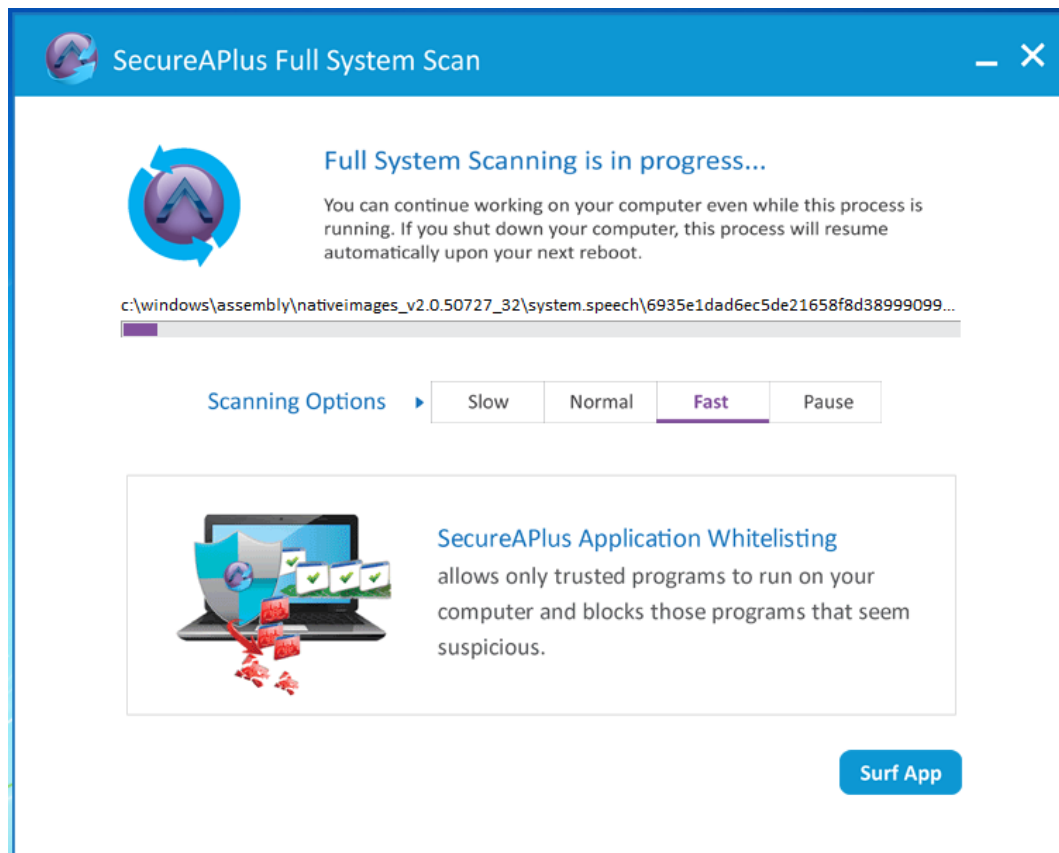
Note:

- For users using the small SecureAPlus installer, they are able to select the features of SecureAPlus during installation.



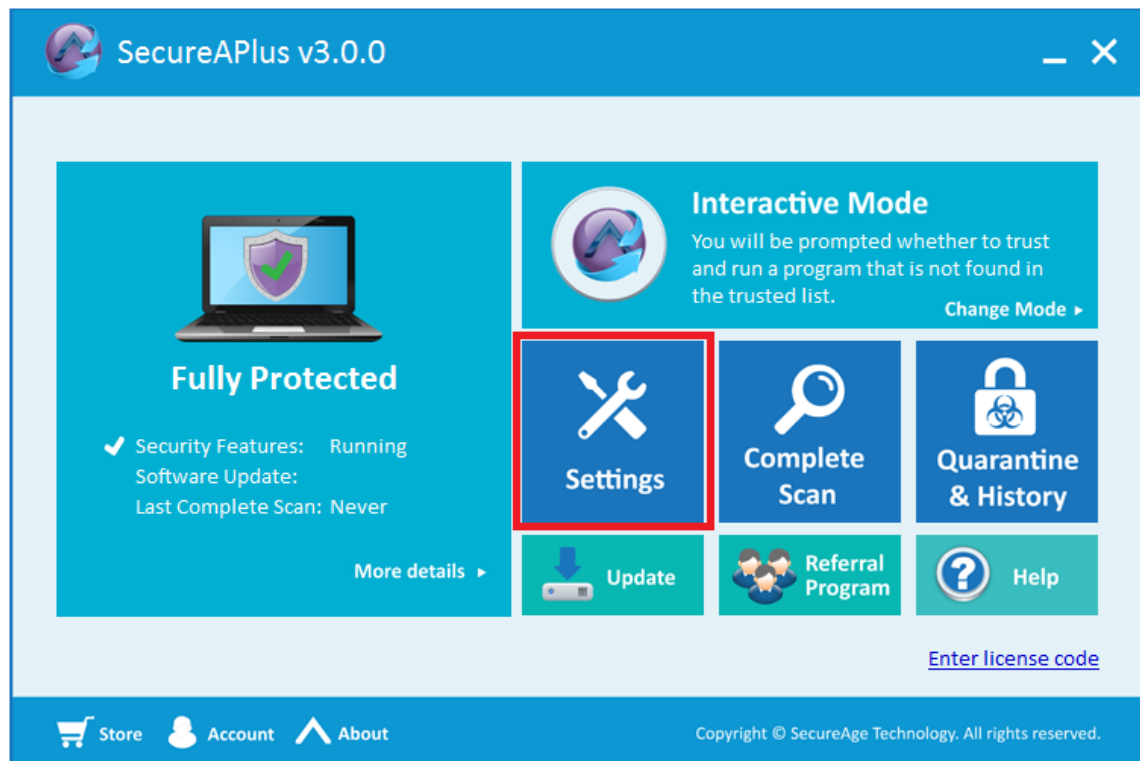
- If user uncheck Antivirus, the dialog with initial whitelisting will appear after installation.
- If user chooses the full installation, the dialog with full system scanning will appear after installation.

- The full system scan will start and the SecureAPlus icon will also appear in the taskbar as shown below.

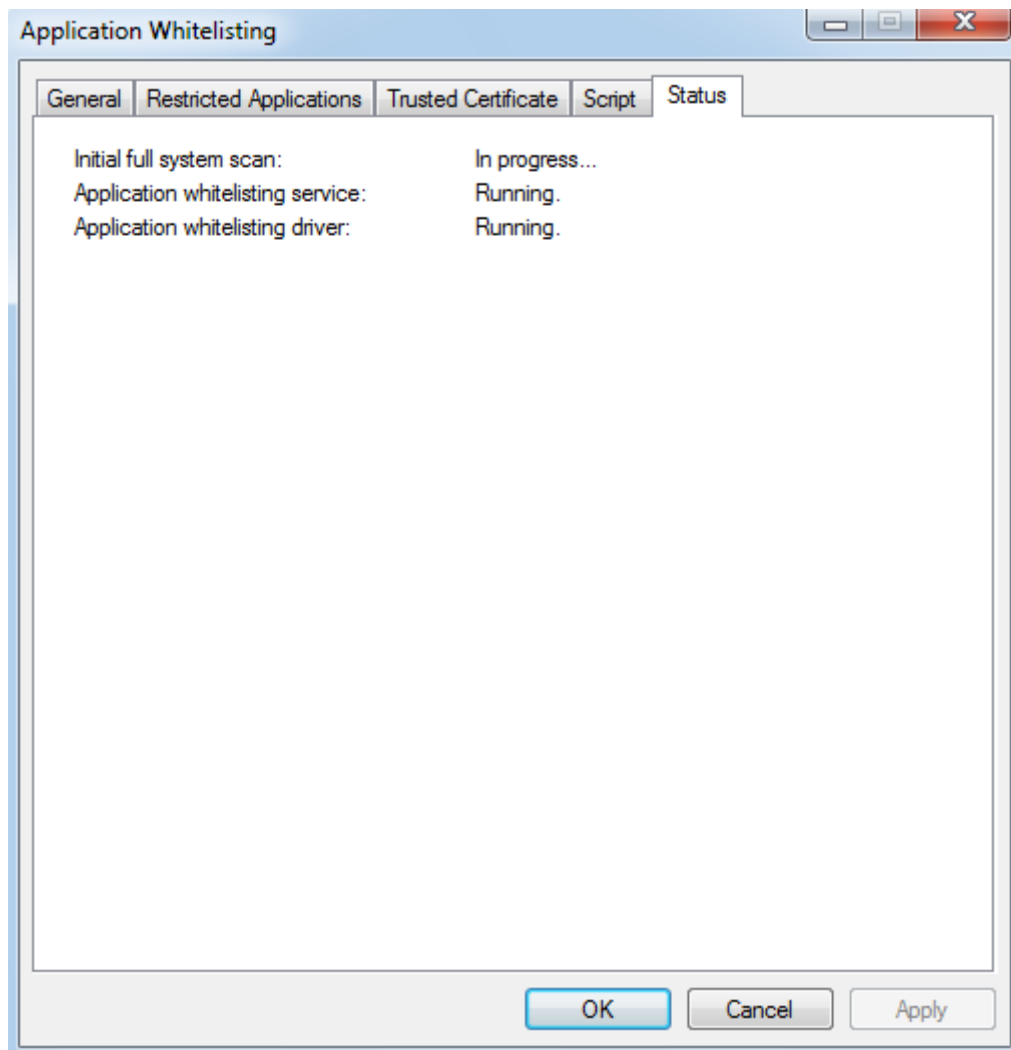


- Click on **Surf App** and it will direct you to the SecureAPlus main console.

- Alternatively, click on the SecureAPlus icon, the SecureAPlus Main Console will launch. Click on **Settings** icon. The **SecureAPlus Settings** window will appear.
- Then navigate to **Application Whitelisting** on the left menu and click on the **Launch Application Whitelisting Settings** button. When the **Application Settings** window appears, click on the **Status** tab.

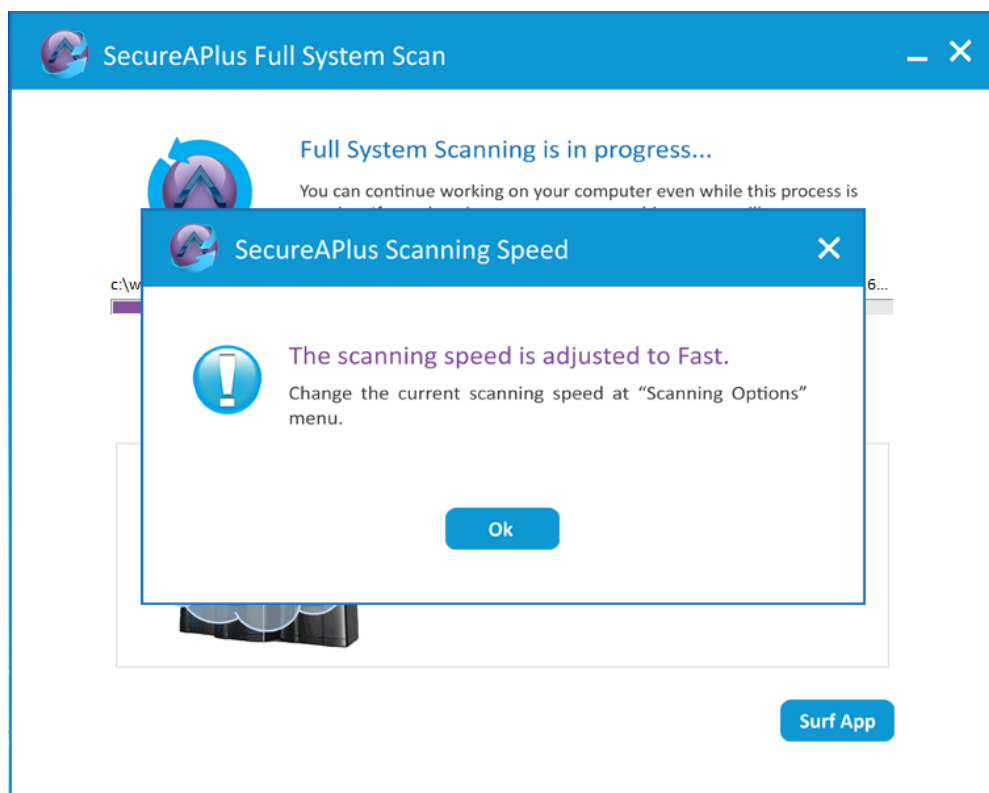
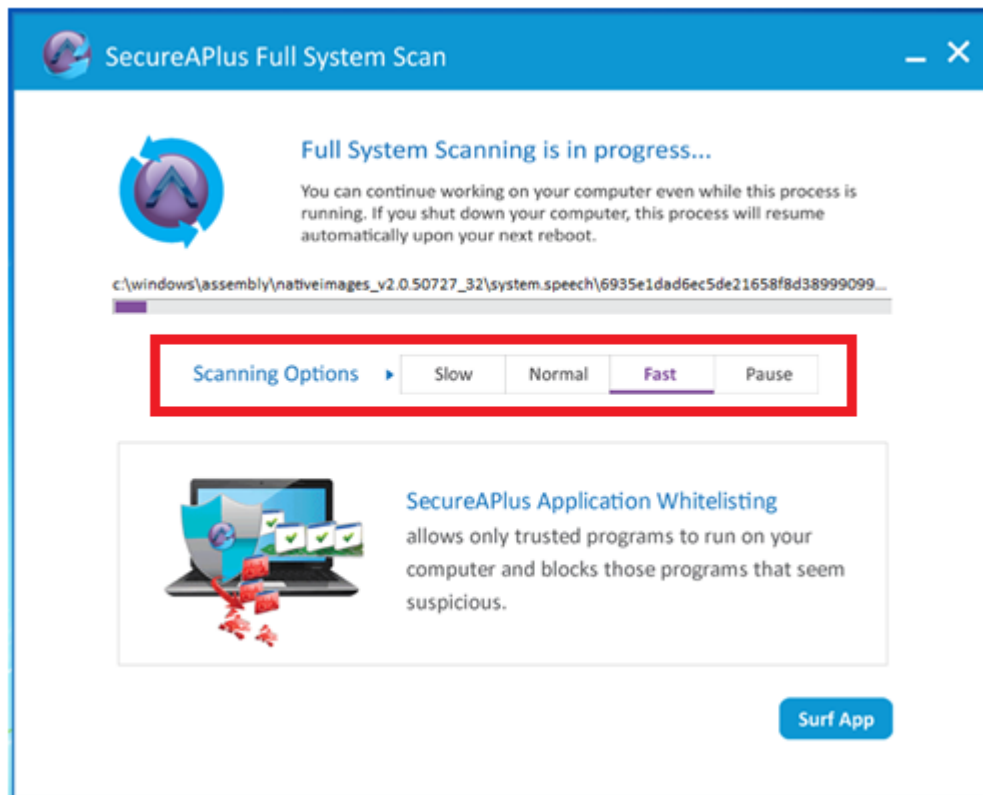


- You should see that it is doing its initial system scan. (This is not applicable to subsequent software update.) It runs in the background so it will not affect the user and can use it as per normal.

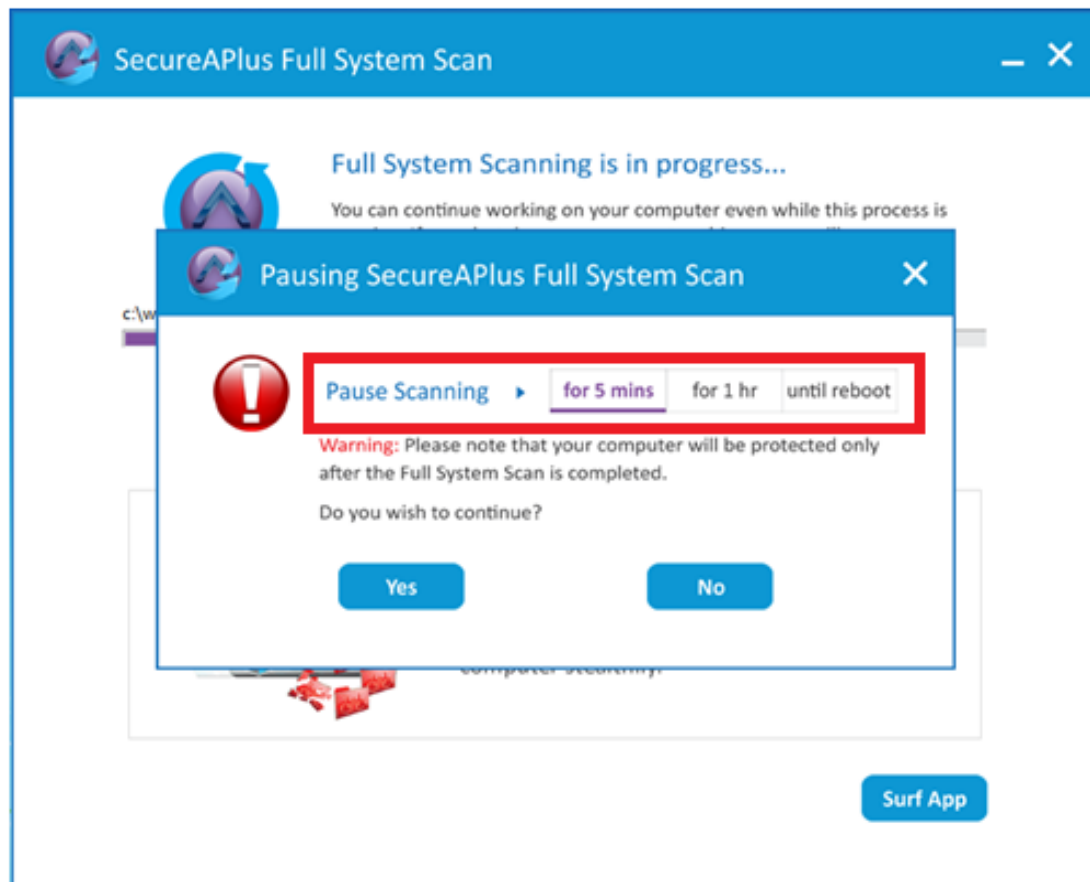
**Note:**

- ▶ During initial installation, Application Whitelisting will do a full system scan on the system to whitelist the files and creates a whitelist database file at the end. It will use this whitelist file to check whether the files are trusted or not.
- ▶ The Application Whitelisting feature will immediately kicks in right after installation, so even while it is still doing the initial system scan, Application Whitelisting will start to prompt when a new file or application is being executed.

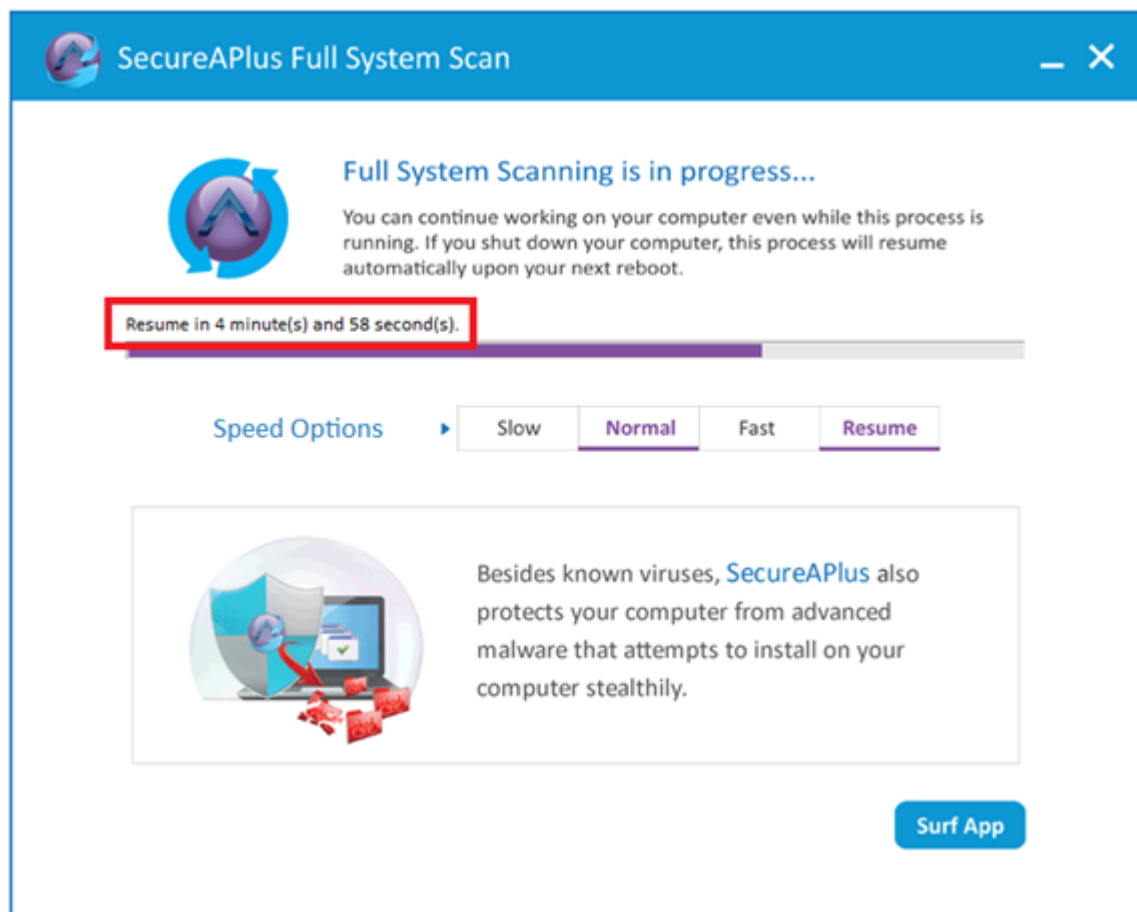
- The speed of the full system scan can be adjust to slow, normal or fast by selecting it under **Scanning Options** via the **SecureAPLus Full System Scan** window as shown below (default is Normal speed):



- If the **Pause** button is being clicked, you can choose to pause it for 5 minutes or 1 hour or until the machine reboot by selecting it under **Pause Scanning** via the **Pausing SecureAPlus Full System Scan** window as shown below:



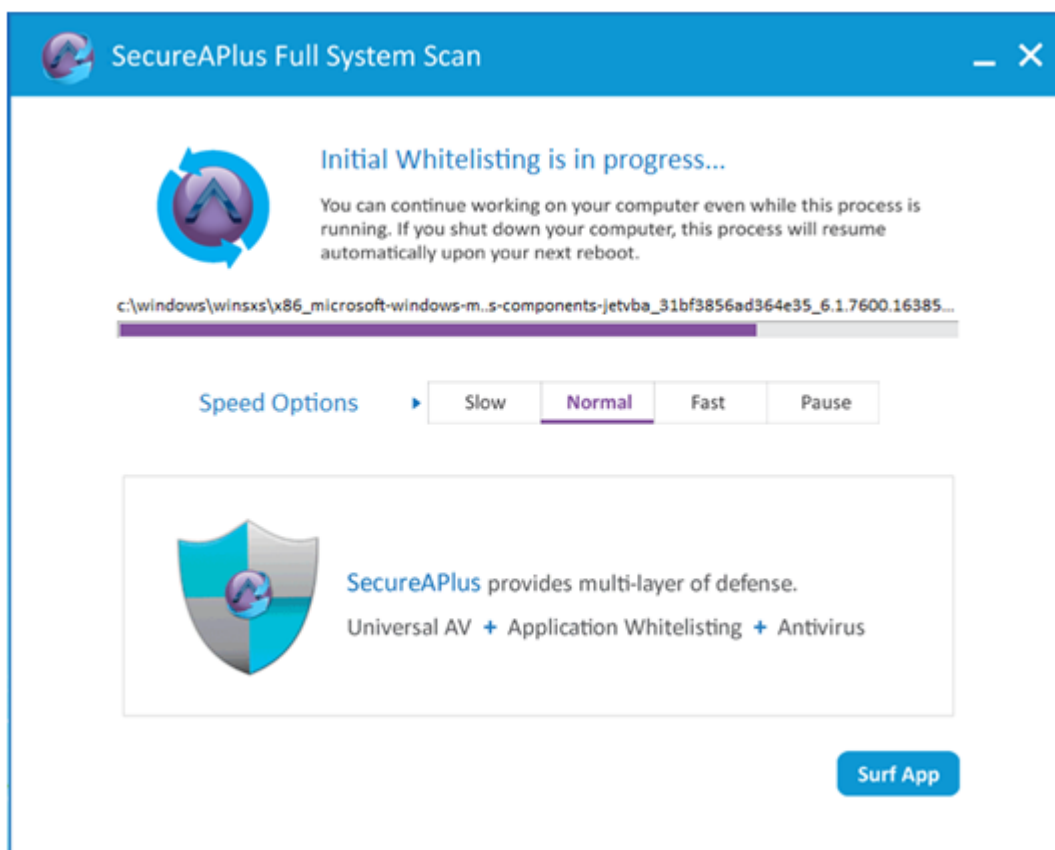
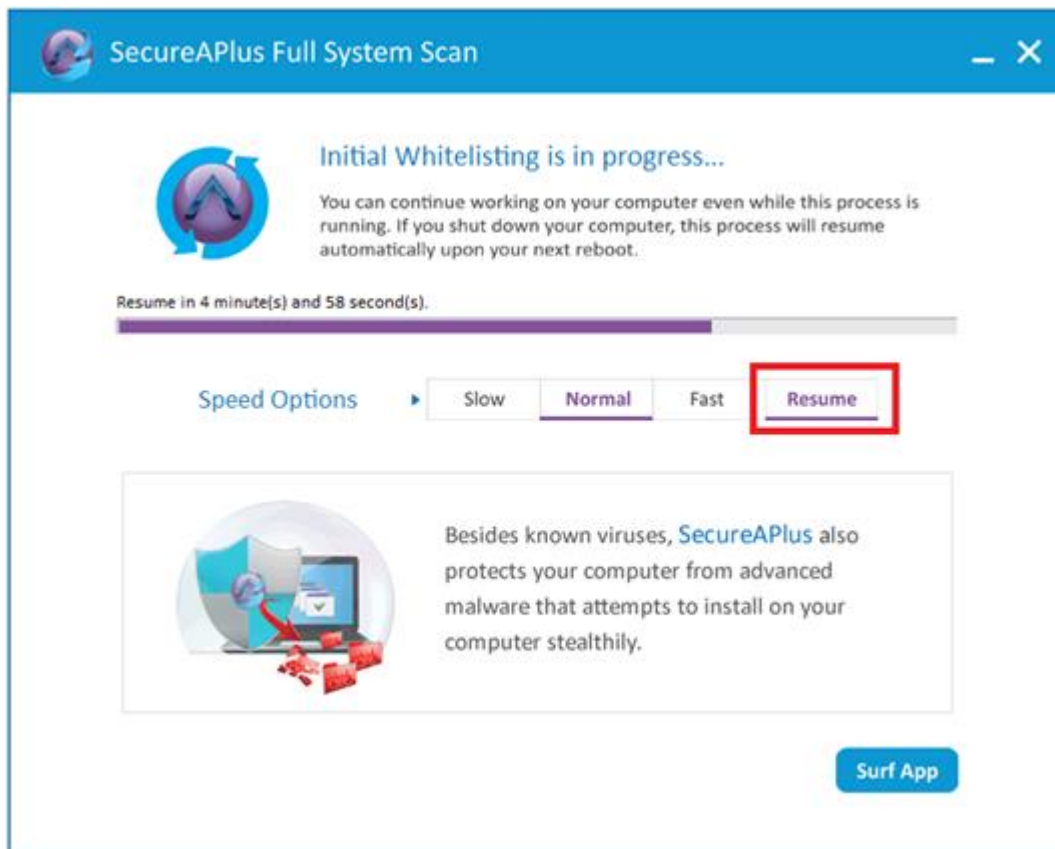
- It will show the current status of the pause as shown below:



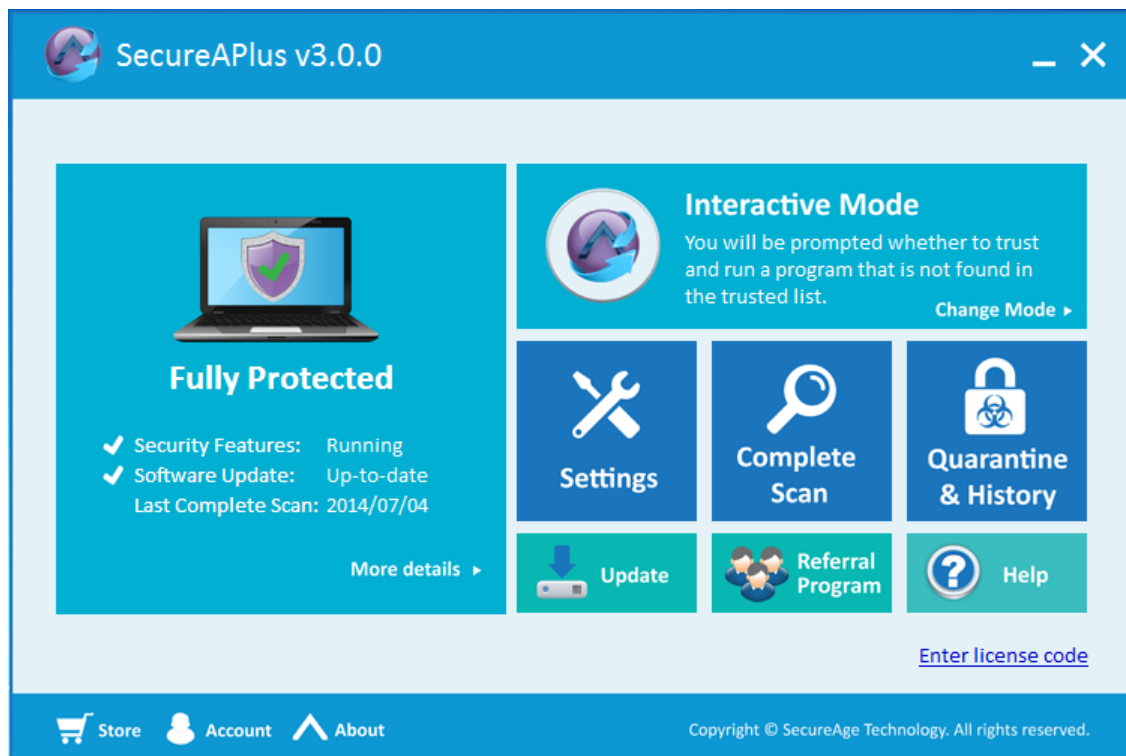
Note:

- ▶ The full system scanning will continue after the countdown time is up.
- ▶ It will also resume when the machine reboots halfway during full system scanning.

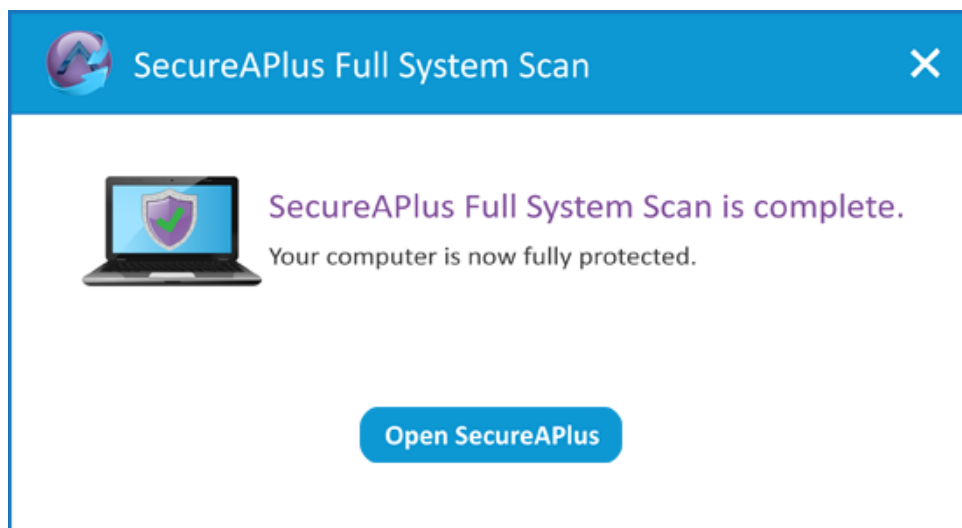
- Click on **Resume** and the full system scanning will resume from where it last stops.



- The **SecureAPlus** software is ready for use.



- When the full system scan is completed, it will show the following message:



- Click on **Open SecureAPlus** button to launch the **SecureAPlus Main Console**. Otherwise, click on **X** on the top right corner of the window to close it.

- After the Universal AV detailed scanning is completed, the following message will be shown if there is no threat detected. Click on **Surf App >>** to navigate to the **SecureAPlus Main Console**, otherwise you can click on **X** located on the top right corner to close the pop up window.



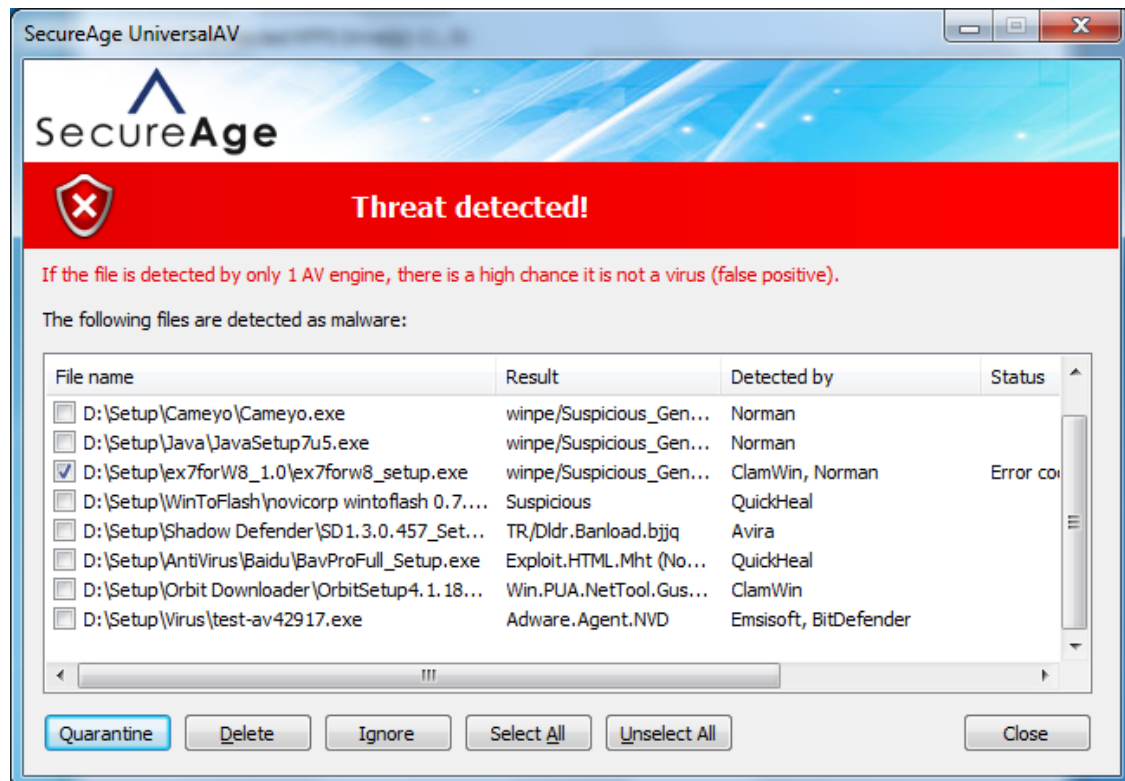
- Else if virus is detected by the Universal AV during initial scanning, the alert as shown will pop up. Click on **More details >>** to view the threats details, otherwise you can click on **X** located on the top right corner to close the pop up window.



Note:

- ▶ The Universal AV will continuously scan the machine using multiples antivirus engines in the cloud server. This will increase the accuracy of detection and within the fastest time possible.
- ▶ As real-time scanning is being done in the cloud server instead of locally, this will not cause your machine to slow down at all.

- The details of the threats will be shown if **More details >>** in the previous step is being clicked.

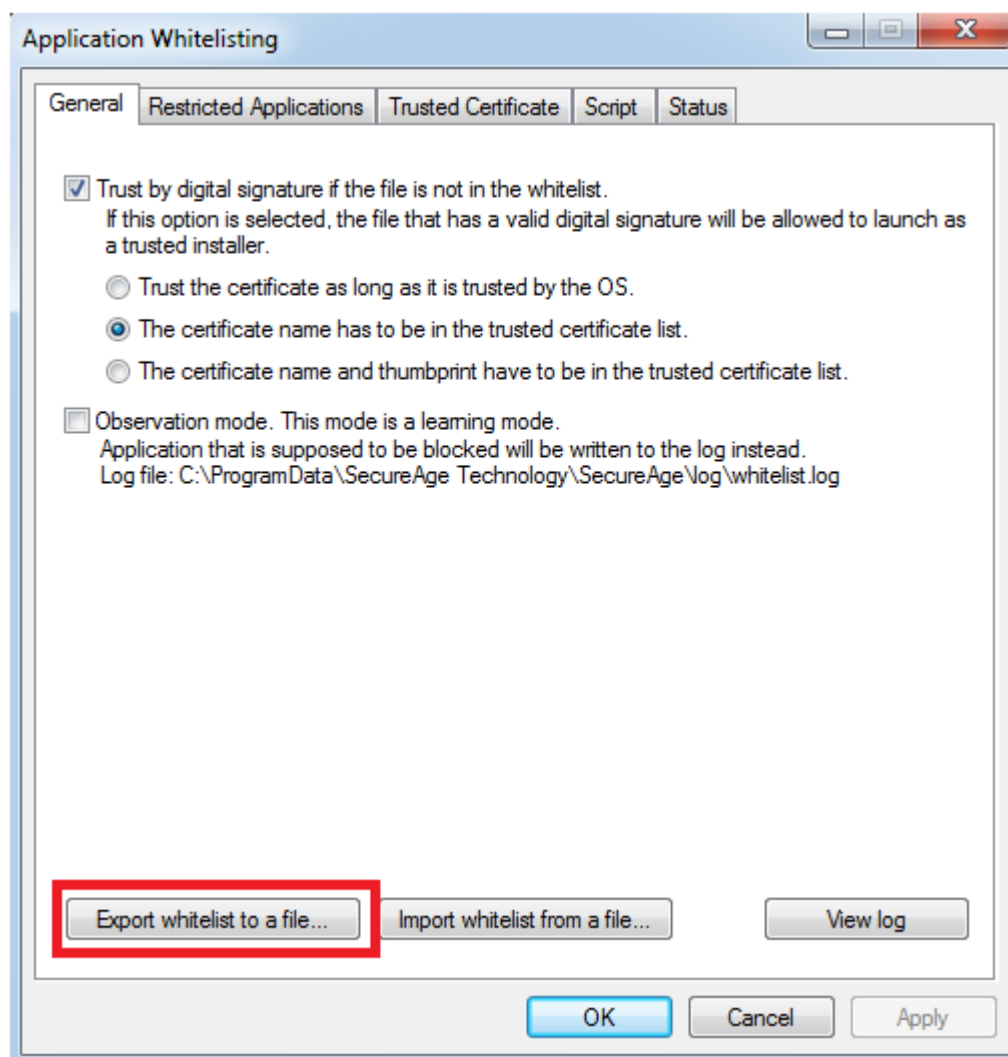


4 Installing Application Whitelisting with Whitelist Gold Image

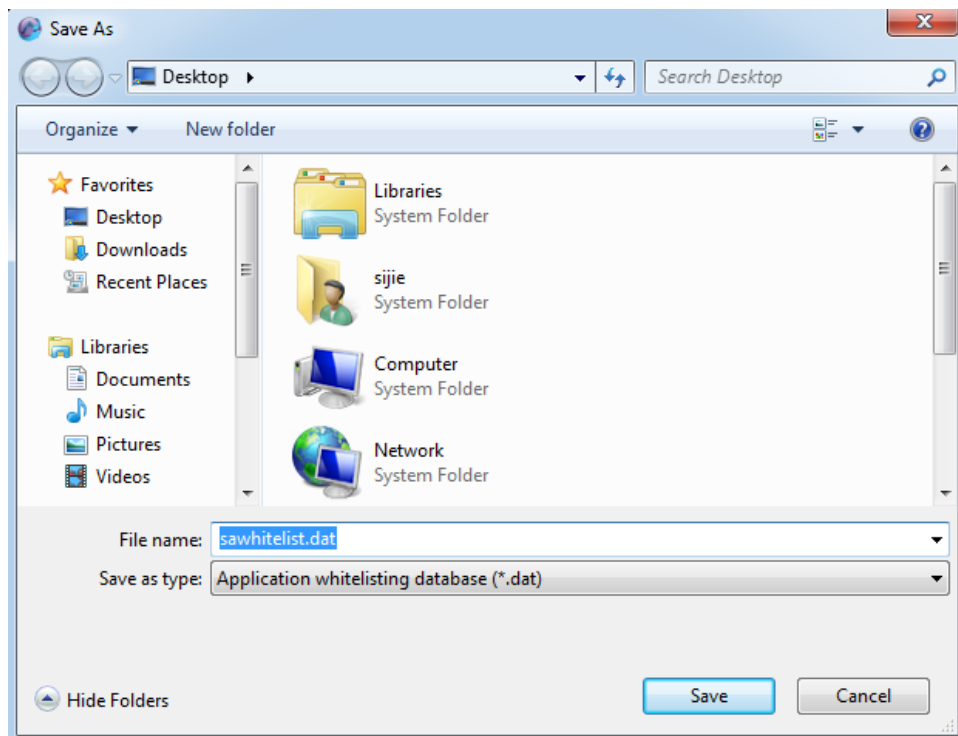
This is for users who already have Application Whitelisting installed on exactly identical machines. Users are able to install SecureAPlus without having the need to whitelist the entire disks again after installation is done.

To install with a whitelist gold image instead, follow the steps below:

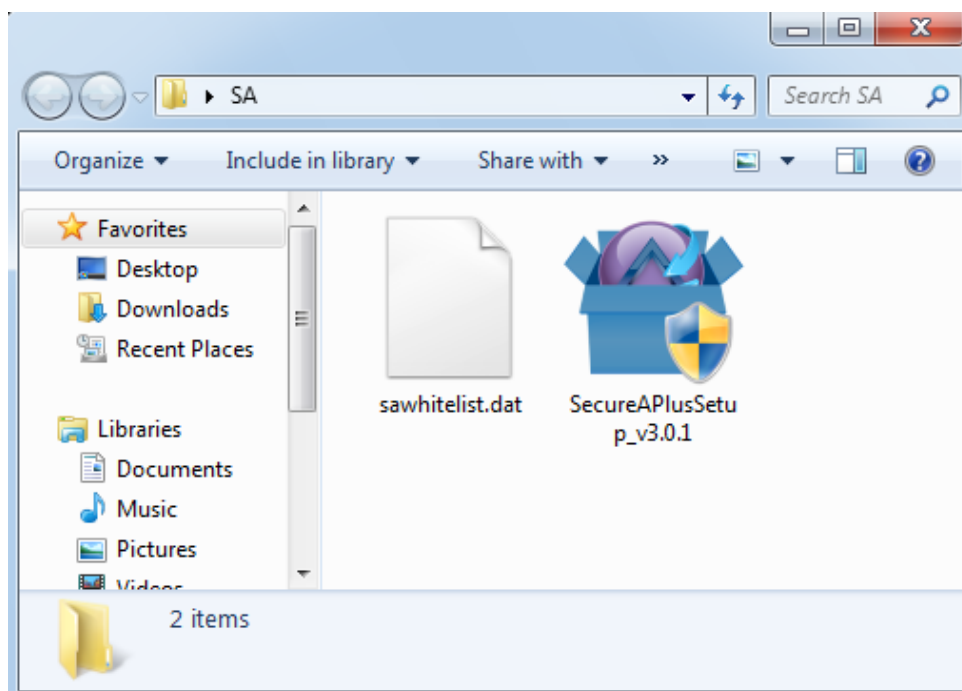
- With Application Whitelisting installed, there is a sawhelist.dat settings file which can be exported from the Application Whitelisting Settings (Refer to SecureAPlus User Guide, **Section 7.2 - General Settings**, Export whitelist to a file)



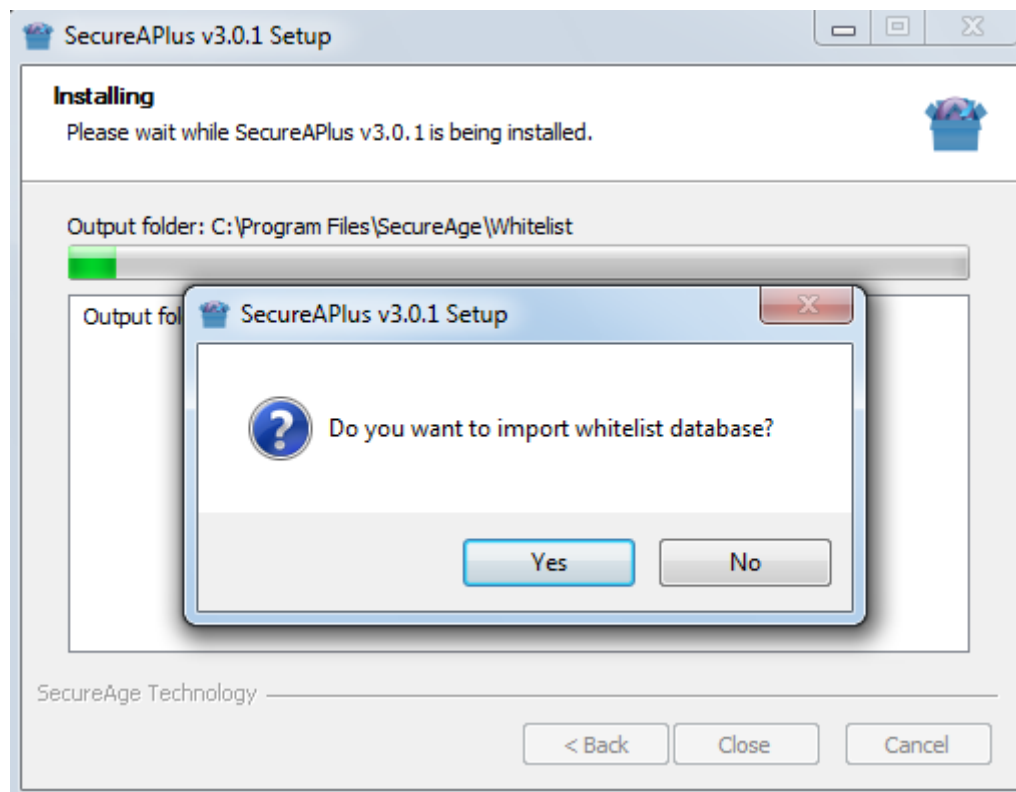
- Do retain the filename and file extension as it is by default (sawhelist.dat).



- Place this file in the same location as SecureAPlus installer file. So when the SecureAPlus installation starts, it will use the exported sawhelist.dat file as the initial whitelist database.
- Run the installer executable file to proceed with installation.



- When prompted to confirm import whitelist database, click on **Yes** to use the exported sawhelist.dat file (located in same location as the installer file) as the initial whitelist database.



5 Silent Installation of SecureAPlus

For silent installation of SecureAPlus, please follow the steps below:

- Execute this command in the command line:

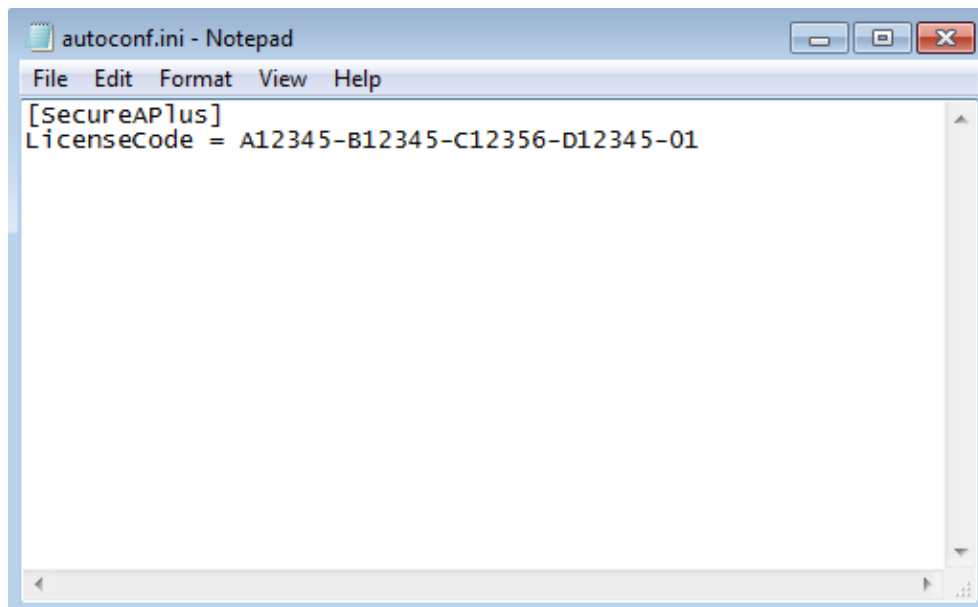
 <SecureAPlus installer filename> <space> /S
- User may need to reboot the machine if it is performing an update.

6 SecureAPlus Mass Installation

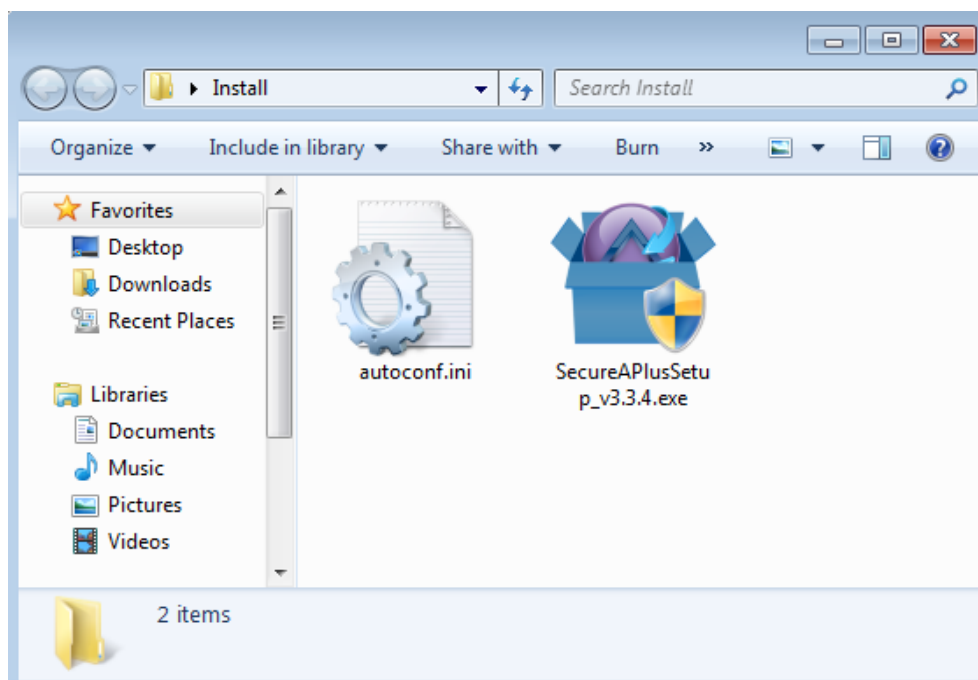
- Create an **autoconf.ini** file and enter the following into the file:

[SecureAPlus]

LicenseCode = A12345-B12345-C12356-D12345-01



- Place the **autoconf.ini** file in the exact same location as the SecureAPlus installer.
- The SecureAPlus installer will use the license code stated in the **autoconf.ini** file.



 **Note:**

- ▶ This section is for doing mass installations of SecureAPlus Premium using a single license code.

Contact Us

For more information, please feel free to contact us.

SecureAge Technology Pte Ltd

3, Fusionopolis Way

#05-21, Symbiosis

Singapore 138633

Tel: (65) 6873 3710

Fax: (65) 6234 4992

Email: contactus@secureage.com

URL: <http://www.secureage.com>